

4290 Lawrenceville Hwy

5,671 Square Feet

Gwinnett County, Lilburn, GA

Sale/Lease

Location:

Northeast Corridor Office Market
Minutes from Gwinnett Mall
Close to I-85 via Pleasant Hill Rd.
Close to Banks, Hotels and Restaurants
45 minutes to Atlanta Airport

Building Facts:

Former Medical/Office
46 Parking Spaces
Direct Street Exposure
Pylon Signage at Street
Covered Drop-off
Quality Corporate Setting

Availability:

Immediate
5,671 Square Feet



 **ANDERSON BELL**

Exclusive

Andy Bell, CCIM

andy@anderson-bell.com

770.933.9900

Information herein has been obtained from sources believed reliable. While accuracy is expected it has not been verified and no guarantee, warranty or representation is made.

www.anderson-bell.com

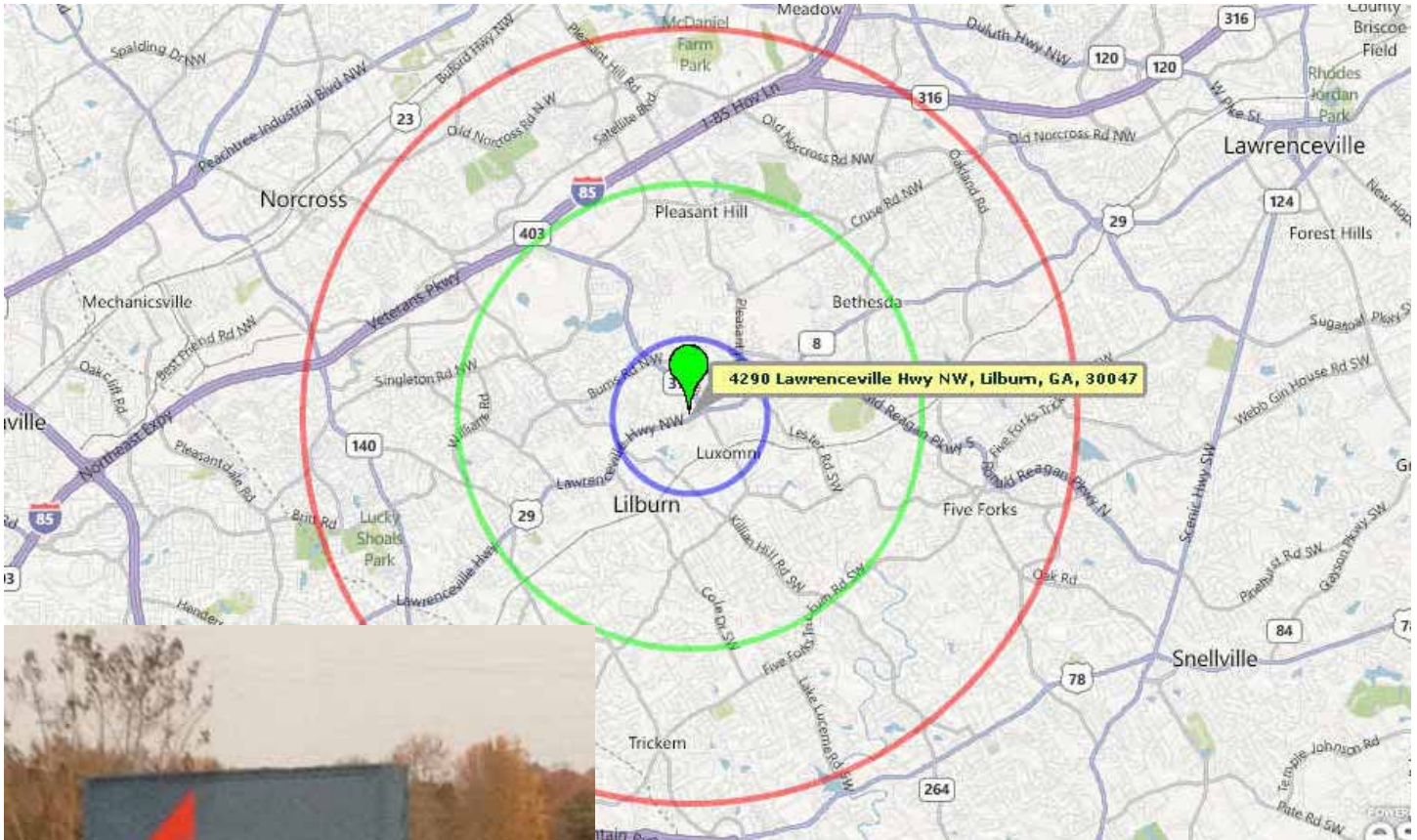
1700 Water Place, Ste 111, Atlanta, GA 30328

CCIM

4290 Lawrenceville Hwy

Gwinnett County, Lilburn, GA

5,671 SF

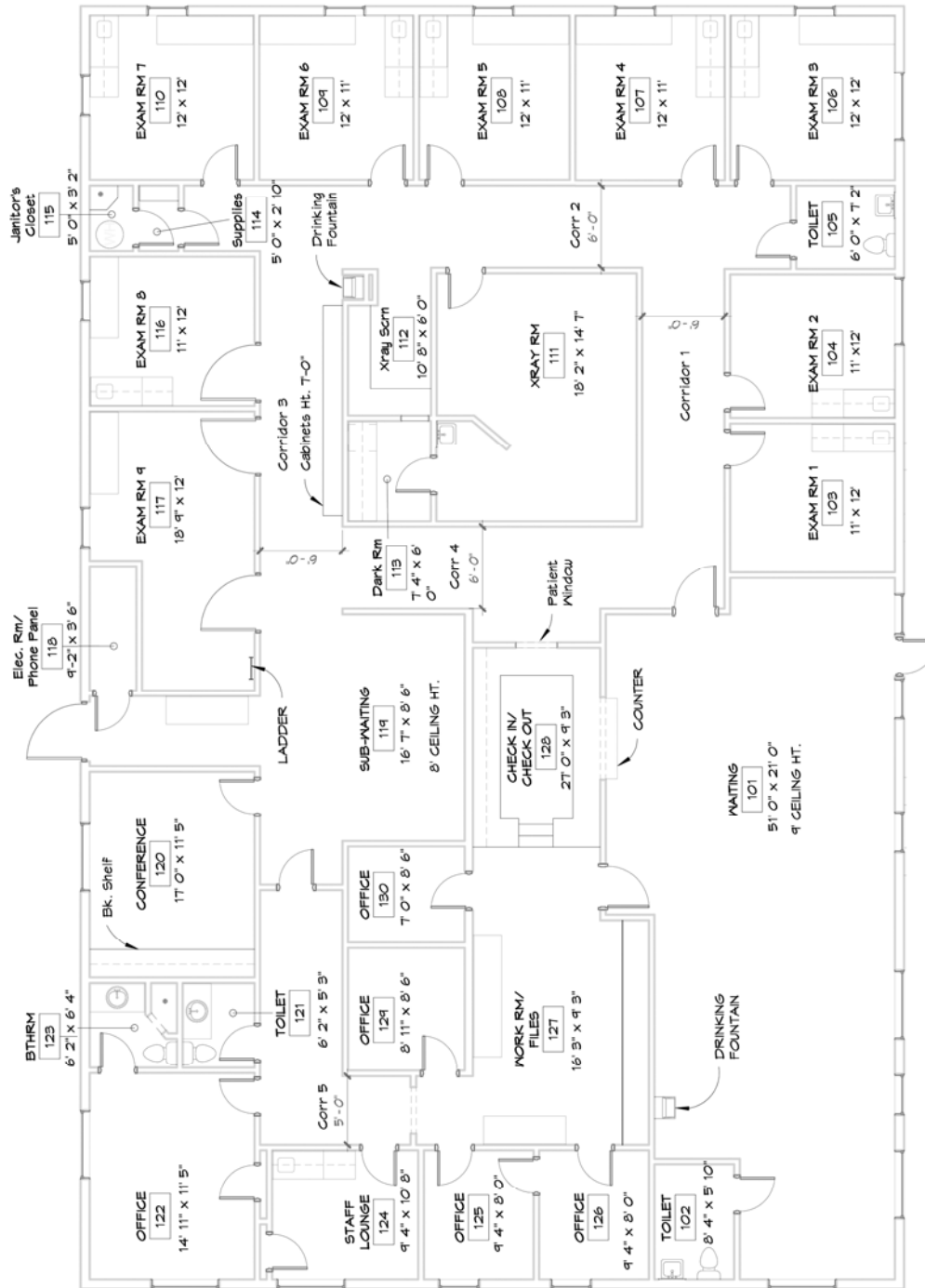


Information herein has been obtained from sources believed reliable. While accuracy is expected it has not been verified and no guarantee, warranty or representation is made.

4290 Lawrenceville Hwy

Gwinnett County, Lilburn, GA

5,671 SF



4290 LAWRENCEVILLE HIGHWAY, LILBURN, GA

SCALE: 1/8"=1'-0"

Information herein has been obtained from sources believed reliable. While accuracy is expected it has not been verified and no guarantee, warranty or representation is made.

